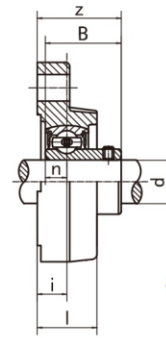
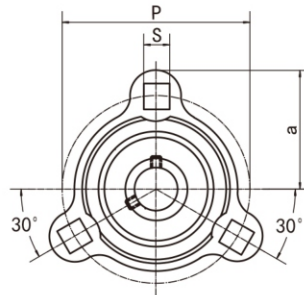
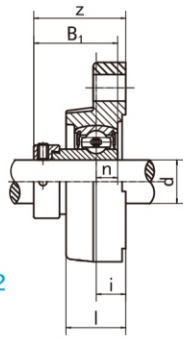


SAFCT2
(SA2-Fitted)

Flange Unit
(Light duty)

SBFCT2
(SB2-Fitted)



SAFCT2

SBFCT2

Unit NO.	Dimensions (mm / in.)									Bolt Size mm/in.	Bearing No.	Housing No.	Weight (kg)
	d	a	p	i	l	s	z	B ₁	n				
SAFCT 201 201-8	12 1/2	40.5 1-19/32	63.5 2-1/2	9.8 25/64	17.5 11/16	7.2 9/32	31.9 1-1/4	28.6 1.1260	6.5 0.2559	1/4	SA201 SA201-8	FCT201	0.26
SAFCT 202 202-9 202-10	15 9/16 5/8										SA202 SA202-9 SA202-10	FCT202	
SAFCT 203 203-11	17 11/16										SA203 SA203-11	FCT203	
SAFCT 204 204-12	20 3/4	45.3 1-25/32	71.5 2-13/16	11 7/16	20 25/32	8.7 11/32	34.5 1-23/64	31 1.2204	7.5 0.2953	5/16	SA204 SA204-12	FCT204	0.34
SAFCT 205 205-13 205-14 205-15 205-16	25 13/16 7/8 15/16 1	47.5 1-7/8	76.2 3	10.3 13/32	20 25/32	8.7 11/32	33.8 1-21/64	31 1.2204	7.5 0.2953	5/16	SA205 SA205-13 SA205-14 SA205-15 SA205-16	FCT205	0.43
SAFCT 206 206-17 206-18 206-19 206-20	30 1-1/16 1-1/8 1-3/16 1-1/4	56.5 2-7/32	90.5 3-9/16	12 15/32	22 7/8	10.3 13/32	38.7 1-17/32	35.7 1.4055	9 0.3543	3/8	SA206 SA206-17 SA206-18 SA206-19 SA206-20	FCT206	0.66
SAFCT 207 207-20 207-21 207-22 207-23	35 1-1/4 1-5/16 1/3/8 1-7/16	61 2-13/32	100 3-15/16	13 33/64	24 15/16	10.3 13/32	42.4 1-43/64	38.9 1.5315	9.5 0.3740	3/8	SA207 SA207-20 SA207-21 SA207-22 SA207-23	FCT207	0.94

Unit NO.	Dimensions (mm / in.)									Bolt Size mm/in.	Bearing No.	Housing No.	Weight (kg)
	d	a	p	i	l	s	z	B	n				
SBFCT 201 201-8	12 1/2	40.5 1-19/32	63.5 2-1/2	9.8 25/64	17.5 11/16	7.2 9/32	25.8 1-1/64	22 0.8661	6 0.2362	1/4	SB201 SB201-8	FCT201	0.21
SBFCT 202 202-9 202-10	15 9/16 5/8										SB202 SB202-9 SB202-10	FCT202	
SBFCT 203 203-11	17 11/16										SB203 SB203-11	FCT203	
SBFCT 204 204-12	20 3/4	45.3 1-25/32	71.5 2-13/16	11 7/16	20 25/32	8.7 11/32	29 1-9/64	25 0.9843	7 0.2756	5/16	SB204 SB204-12	FCT204	0.32
SBFCT 205 205-13 205-14 205-15 205-16	25 13/16 7/8 15/16 1	47.5 1-7/8	76.2 3	10.3 13/32	20 25/32	8.7 11/32	29.8 1-11/64	27 1.0630	7.5 0.2953	5/16	SB205 SB205-13 SB205-14 SB205-15 SB205-16	FCT205	0.40
SBFCT 206 206-17 206-18 206-19 206-20	30 1-1/16 1-1/8 1-3/16 1-1/4	56.5 2-7/32	90.5 3-9/16	12 15/32	22 7/8	10.3 13/32	34 1-11/32	30 1.1811	8 0.3150	3/8	SB206 SB206-17 SB206-18 SB206-19 SB206-20	FCT206	0.60
SBFCT 207 207-20 207-21 207-22 207-23	35 1-1/4 1-5/16 1/3/8 1-7/16	61 2-13/32	100 3-15/16	13 33/64	24 15/16	10.3 13/32	36.5 1-7/16	32 1.2598	8.5 0.3346	3/8	SB207 SB207-20 SB207-21 SB207-22 SB207-23	FCT207	0.81

Note: To specify relubricatable units, add "G" suffix, (e.g., SBFCT205-16G)